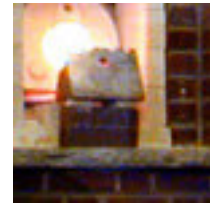


# THE CHATHAM-HARWICH NEWCOMERS CLUB

Invites you to:



## AN AFTERNOON IN SANDWICH At the SANDWICH GLASS MUSEUM



followed by dinner at the  
**DAN'L WEBSTER INN**  
Sunday, April 11, 2010

We will begin our afternoon at the Sandwich Glass Museum at 3:30 p.m. We will have plenty of time to see the Museum displays of Sandwich glass and learn the history of the Sandwich Glass factory, view the video presentation, and see a glass blowing demonstration (which begins at 4:00 p.m.) After the Museum we will have time to stroll through the village to the Dan'l Webster Inn for dinner (which begins with drinks and hors d'oeuvres) at 5:00 p.m. **The cost for the Museum and dinner is \$52 per person (incl. tax and gratuity).** Make your check payable to: Chatham-Harwich Newcomers and give, or mail it (with the completed reservation form) to: Dave Ryer, 73 Church St., Harwich, MA 02645. If you have any questions, call Dave at 508-432-0684. Refunds will not be made for cancellations, but if there is a waiting list, you may be able to sell your tickets to someone on the list. **NOTE: RESERVATION FORMS MUST BE RETURNED BY MARCH 24TH.**

There will be a cash bar and included hot hors d'oeuvres.

### MENU

#### APPETIZER

New England Clam Chowder

#### DINNER SALAD

Dan'l Webster Salad - *Select lettuces and baby greens with white French dressing*

#### ENTRÉE CHOICES

Baked Stuffed Sole - *Fresh local sole, rolled and filled with a crab stuffing topped with a sauce American*

Crispy Mango Chicken - *Boneless breast sautéed in a honey cornflake crust. Served with mango sauce*

Pasta Primavera - *Pasta and fresh vegetables in a creamy four cheese sauce*

#### ACCOMPANIMENT

Yukon Whipped Potatoes

#### DESSERT

Wild Berry Parfait

Reservation Form:

Person 1 \_\_\_\_\_

Person 2 \_\_\_\_\_

Entrée Choice: \_\_\_\_\_

Entrée Choice: \_\_\_\_\_

Telephone #: \_\_\_\_\_ e-mail address: \_\_\_\_\_